

Marine loading arm – B0028



The B0028 marine loading arm is designed especially to meet the needs of barge transfer and river boats installations with marginal (low) tidal variation.

The B0028 marine loading arm is of self supporting design, counterweight balanced, with separated and direct linked counterweights for inboard- and outboard arm for easy, manually operation.

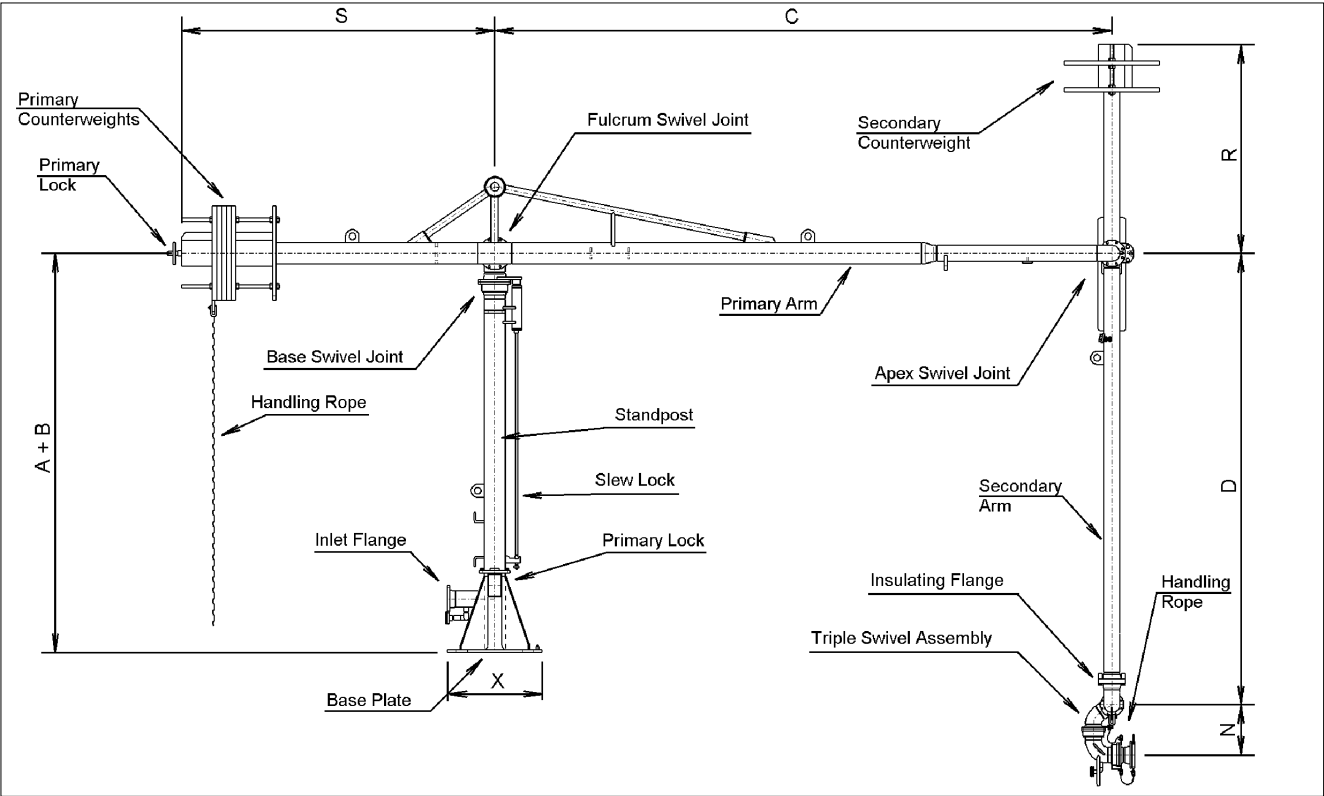
Its low cost and ease of handling in all operational, manoeuvring and maintenance position makes it an economic alternative to hose loading installations (e.g. no need for crane and minimum man power). Further advantages are provided by high safety standards, reliability and lowest maintenance cost.

Additional equipment is available.

- sizes
from 4" up to 16"
- pressure rates
from PN 10 up to PN 40
- materials:
carbon steel, low temperature steel, stainless steel
- temperature range:
from -50 °C up to +200 °C
- customized solutions
on request
- EMCO high performance
swivel joints

B0028

Dimensions and technical data



Technical data (standard) – excl. emergency release system									
NB	A + B	X	C	D	N	S	flow rate	weight	bending moment
	mm	mm	mm	mm	mm	mm	m³/h	kN	kN/m
4"	4000	1000	5500	5500	590	3000	300	40	65
6"	4000	1000	5500	5500	590	3000	600	40	65
8"	4000	1000	6500	6500	740	3000	1100	57	90
10"	5000	1000	7500	7500	890	4000	1700	72	170

Design

- Fully balanced with independent counterweights for inboard and outboard arm
- self supporting system
- less men power due to low weight
- swivel joints either as welded-in or flanged version
- for transfer of mineral oil, chemicals and liquefied gases
- seals available in Buna-N, Viton, PTFE or any other specific materials

Accessories

- envelope warning system
- drainage connections
- hydraulic operation
- insulation flange
- manual quick coupler
- nitrogen purge line
- purge line
- vacuum breaker

Fluid Transfer Division

SMAILE-PLUSS SIA. LV1007. 79A Slokas str. Riga. Latvia +37129214098

EMCOWHEATON

A Gardner Denver Product

Whilst the content of this leaflet has been edited with the greatest care, we are not liable for any errors and/or omissions. Subject to change without notice.

EMCO WHEATON GmbH
Emcostraße 2-4 · 35274 Kirchhain · Germany
Phone +49 6422 84-0 · Fax +49 6422 5100
www.emcowheaton.com · sales-de@emcowheaton.com