

## Marine loading arm – B0300

The B0300 marine loading arm has been designed for any kind of special application where it is essential to keep the product pipe thoroughly the same size for either economical or technical reasons, e.g. cryogenic products up to  $-104^{\circ}\text{C}$ , piggyback systems and PTFE-lining. This design has proven its reliability since many years now.

The B0300 design includes a special support structure for the standpost, inboard and outboard arm and thus separating any mechanical loads imposed to the product pipe, except the dead-weight and internal pressure loads. Additionally this also provides the optimum in regards to operational safety aspects, low weight of the arm and lowest wind loads imposed to the jetty structure.

The balancing of the arm is achieved by a rigid link pantograph system with independent counterweights direct linked to the inboard- and outboard arm. Thus providing that accurate balance is definitely ensured throughout all manoeuvring and connecting positions.

The advantages in comparison with hose loading facilities are ease of handling, higher availability/flexibility, less manpower and minimum maintenance required by maximal operational safety and minimised operational cost (cost of ownership).

The B0300 is designed for hydraulically operation and can be fitted with the most sophisticated ancillary equipment.

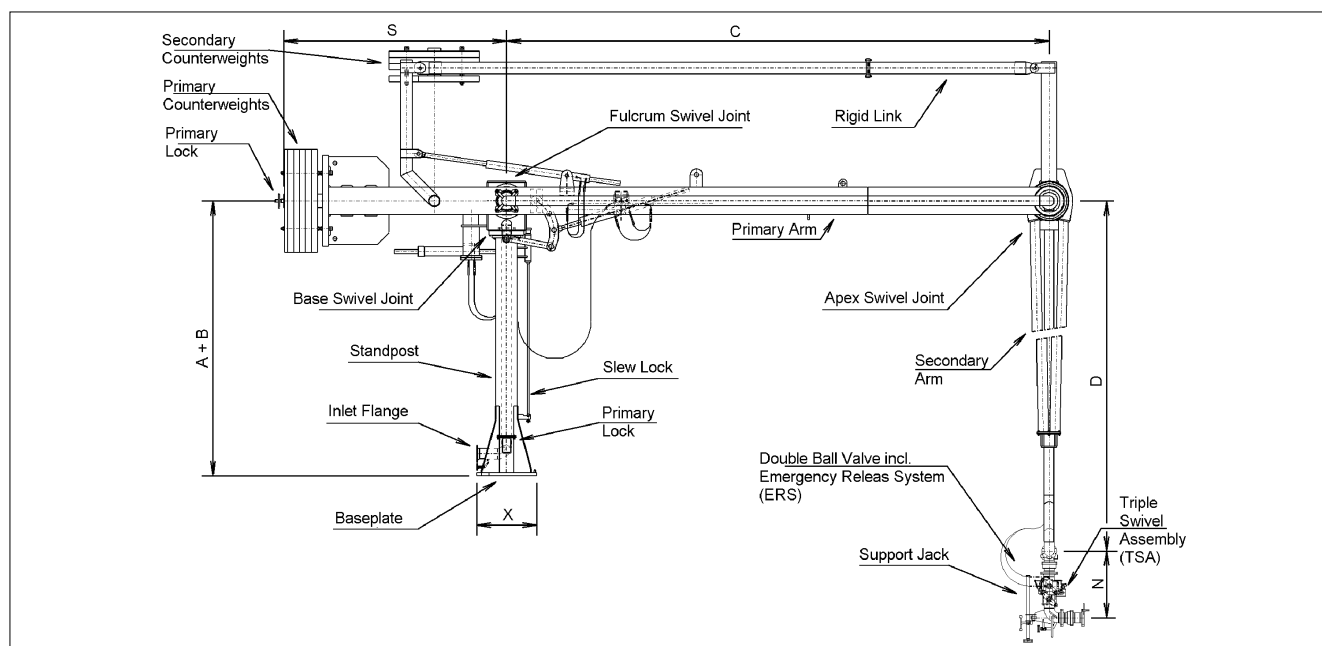
Additional equipment is available.



- sizes from 4" up to 16"
- pressure rates from PN 10 up to PN 40
- materials: carbon steel, low temperature steel, stainless steel
- temperature range: from  $-104^{\circ}\text{C}$  up to  $+200^{\circ}\text{C}$
- customized solutions on request
- EMCO high performance swivel joints

**B0300**

## Dimensions and technical data



### Technical data (standard) – incl. emergency release system

NB	A + B	X	C	D	N	S	flow rate	weight	bending moment
	mm	mm	mm	mm	mm	mm	m <sup>3</sup> /h	kN	kN/m
4"	5500	1000	8000	8000	900	4500	300	160	325
6"	5500	1000	8000	8000	1000	4500	600	165	338
8"	5500	1500	8000	8000	1350	4500	1100	190	368
10"	7000	1500	11000	9000	1750	6000	1700	360	729
12"	7000	1500	11000	10000	2100	6000	2500	395	759
16"	7000	2000	11000	11000	2400	6000	4000	490	870

### Design

- fully balanced with independent counterweights for inboard and outboard arm
- special support frame to reduce mechanical loads imposed to the inboard arm
- light weight design
- swivel joints either as welded-in or flanged version
- for transfer of mineral oil, chemicals and liquefied gases
- seals available in Buna-N, Viton, PTFE or any other specific materials
- piggable product pipe
- special material for product pipe

### Accessories

- envelope warning system
- drainage connections
- emergency release system (ERS)
- hydraulic operation
- hydraulic quick coupler
- insulation flange
- manual quick coupler
- nitrogen purge line
- purge line
- vacuum breaker
- vapour return line

## Fluid Transfer Division

**EMCOWHEATON**

*A Gardner Denver Product*

SMAILE-PLUSS SIA. LV1007. 79A Slokas str. Riga. Latvia +37129214098

Whilst the content of this leaflet has been edited with the greatest care, we are not liable for any errors and/or omissions. Subject to change without notice.

EMCO WHEATON GmbH  
Emcostraße 2-4 · 35274 Kirchhain · Germany  
Phone +49 6422 84-0 · Fax +49 6422 5100  
www.emcowheaton.com · sales-de@emcowheaton.com