

2" (Ø 70 mm) Technical Information

Tank Unit (Adapter) and Hose Unit (Coupler)



According to NATO STANAG 3756

Material	Maximum Working Pressure	Test Pressure	Minimum Burst Pressure
Aluminium	16 bar / 232 psi	24 bar / 348 psi	80 bar / 1160 psi
Brass/Gunmetal	16 bar / 232 psi	24 bar / 348 psi	80 bar / 1160 psi
Stainless Steel	25 bar / 363 psi	37,5 bar / 544 psi	125 bar / 1813 psi
Titan	25 bar / 363 psi	37,5 bar / 544 psi	125 bar / 1813 psi
Hastelloy	25 bar / 363 psi	37,5 bar / 544 psi	125 bar / 1813 psi
PEEK	6 bar / 87 psi	9 bar / 131 psi	30 bar / 435 psi

Connections

1½" and 2" in BSP, NPT or S60x6 thread, or flanged inlet.

Applications

For industrial process plant, road and rail tankers, ISO tank containers, IBC containers, pharmaceutical and petrochemical industries or on any application where spillage needs to be minimized.

Media

Petroleum products: gasoline, diesel, oil etc.

Chemical products: AdBlue, ethylene oxide, propylene oxide, acrylonitrile, butadiene, ammonia, vinyl chloride, toluene, xylene, sulphuric acid, phenol etc.

Gas: vapor recovery/balance systems for various media.

Dry powder.

Material of Body

Aluminium, brass/gunmetal, stainless steel, Hastelloy and PEEK. Other materials on request.

Seals

Standard seals in FPM (Viton®) - alternatively EPDM, FKM (Chemraz®, Kalrez®), NBR/HBNR. Other materials on request.

High Flow Rates / Low Pressure Drop

Allows maximum product transfer with minimal losses.

Recommended Maximum Flow Rates

900 litres/minute (fuel)

Selectivity

- avoid mixing products

To avoid product contamination caused by connecting a hose unit to the wrong tank unit, selective versions of the hose and tank units are available.

Each unit has a number of selective positions, designated by a coded part number according to the coupling size – specify when placing order. See page 32 ff.

Interchangeability

Compatible with couplings of other manufacturers.

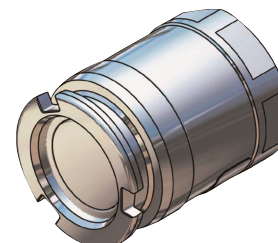
Hose Unit with Integrated Swivel

All hose units are supplied with an integrated swivel.

2" (Ø 70 mm) Tank Unit (Adapter) – Female Thread

Connection ¹⁾ Inch/DN	Body Material ²⁾	Seal		Weight ≈		Mann Tek Code No.
		O-Ring ³⁾	Thread Seal	kg	lbs	
F 1½" BSP	Al	Standard: FPM/FKM (Viton®)	PUR (Polyurethane)	0,4	0.8	T207A1101B
F 2" BSP						T210A1101B
F S60x6						T2108A1101B
F W2" - 7						T2112A1101B
F 1½" NPT			—	0,4	0.8	T208A1101
F 2" NPT						T211A1101
F 1½" BSP	Br		PUR (Polyurethane)	1,2	2.7	T207A2201B
F 2" BSP				1,1	2.4	T210A2201B
F S60 x 6				1,0	2.2	T2108A2201B
F W2" - 7				1,0	0.9	T2112A2201B
F 1½" NPT			—	0,4	0.9	T208A2201
F 2" NPT				1,1	2.4	T211A2201
F 1½" BSP	SS		PTFE (Teflon®)	1,1	2.4	T207A4401A
F 2" BSP				1,0	2.2	T210A4401A
F S60 x 6				1,0	2.2	T2108A4401A
F 1½" NPT		—	1,2	2.7	T208A4401	
F 2" NPT	1,1		2.4	T211A4401		
F 1½" BSP	Titan	PTFE (Teflon®)			T207A6601A	
F 2" BSP			0,6	1.3	T210A6601A	
F 1½" NPT		—			T208A6601	
F 2" NPT			0,6	1.3	T211A6601	
F 1½" BSP	Hastelloy	PTFE (Teflon®)			T207A7701A	
F 2" BSP					T210A7701A	
F 1½" NPT		—			T208A7701	
F 2" NPT					T211A7701	
F 1½" BSP	PEEK	PTFE (Teflon®)			T207A9901A	
F 2" BSP			0,3	0.6	T210A9901A	
F 1½" NPT		—			T208A9901	
F 2" NPT			0,3	0.6	T211A9901	

According to
NATO STANAG 3756



¹⁾ F = Female thread, BSP = EN ISO 228, NPT = ANSI B1.20.1, S60 x 6 = thread for IBC, W 2" heating oil connection Sweden

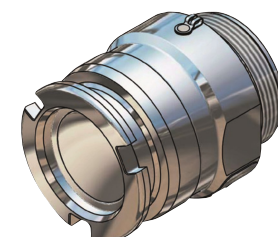
²⁾ Material: Al = Aluminium, Br = Brass, SS = Stainless Steel

³⁾ Standard seal FPM/FKM. Alternative materials, e.g. EPDM, Chemraz®, Kalrez®, NBR or HNBR on request.

2" (Ø 70 mm) Tank Unit (Adapter) – Male Thread

Flange ¹⁾	Body Material ²⁾	Seal ³⁾	Weight ≈		Mann Tek Code No.	
		O-Ring	kg	lbs		
M 2" BSP	Al	Standard: FPM/FKM (Viton®)	1,0	2.2	T278A1101	
M 2" NPT					T279A1101	
M W2" - 7					T2123A1101	
M 2" BSP	Br				T278A2201	
M 2" NPT					T279A2201	
M W2" - 7					T2123A2201	
M 2" BSP	SS		Other on request.	1,0	2.2	T278A4401
M 2" NPT				1,1	2.4	T279A4401

According to
NATO STANAG 3756



¹⁾ M = Male thread, BSP = EN ISO 228, NPT = ANSI B1.20.1, S60 x 6 = thread for IBC, W 2" heating oil connection Sweden

²⁾ Material: Al = Aluminium, Br = Brass, SS = Stainless Steel

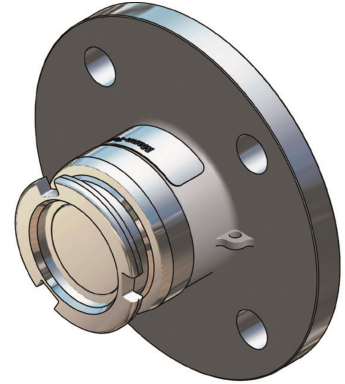
³⁾ Standard seal FPM/FKM. Alternative materials, e.g. EPDM, Chemraz®, Kalrez®, NBR or HNBR on request.

Viton® is a registered trademark of DuPont, DuPont Elastomers.

2" (Ø 70 mm) Tank Unit (Adapter) – Flanged Inlet

Flange ¹⁾	Body Material ²⁾	Seal ³⁾	Weight ≈		Mann Tek Code No.
		O-Ring	kg	lbs	
undrilled Ø 165 mm	Al	Standard: FPM/FKM (Viton®) Other on request.	1,0	2.2	T219B1101
DN 40 PN 10/16 Type A			0,9	2.0	T227B1101
1½" ASA 150			0,8	1.8	T255B1101
DN 50 PN 10/16 Type A			1,0	2.2	T230B1101
2" ASA 150			0,9	2.0	T257B1101
DIN 28459 'TW 1' / DN 80			0,9	2.0	T265B1101
undrilled Ø 165 mm	GM		3,3	7.3	T219B2201
DN 40 PN 10/16 Type B			2,5	5.5	T227B2201
DN 40 PN 25/40 Type B					T228B2201
1½" ASA 150			2,2	4.9	T255B2201
1½" ASA 300					T256B2201
DN 50 PN 10/16 Type B			3,1	6.8	T230B2201
DN 50 PN 25/40 Type B					T231B2201
2" ASA 150			2,5	5.1	T257B2201
2" ASA 300					T258B2201
DIN 28459 'TW 1' / DN 80			2,4	5.3	T265B2201
undrilled Ø 165 mm	SS		3,2	7.1	T219B4401
undrilled Ø 165 mm **)					T219B4401F
DN 40 PN 10/16 Type B			2,4	5.3	T227B4401
DN 40 PN 10/16 Type B **)					T227B4401F
DN 40 PN 25/40 Type B			2,4	5.3	T228B4401
DN 40 PN 25/40 Type B **)					T228B4401F
1½" ASA 150			1,7	3.8	T255B4401
1½" ASA 150 **)					T255B4401F
1½" ASA 300			2,1	4.6	T256B4401
1½" ASA 300 **)					T256B4401F
DN 50 PN 25/40 Type E *)			2,9	6.4	T229B4401
DN 50 PN 10/16 Type B			2,7	6.0	T230B4401
DN 50 PN 10/16 Type B **)					T230B4401F
DN 50 PN 25/40 Type B			3,0	6.6	T231B4401
DN 50 PN 25/40 Type B **)					T231B4401F
2" ASA 150			2,4	5.3	T257B4401
2" ASA 150 **)					T257B4401F
2" ASA 300			2,5	5.5	T258B4401
2" ASA 300 **)					T258B4401F
DIN 28459 'TW 1' / DN 80					T265B4401
DN 50 DIN 11864					T2152B4401
undrilled Ø 165 mm	Titan				T219A6601
DN 40 PN 10/16 Type B					T227A6601
DN 40 PN 25/40 Type B					T228A6601
1½" ASA 150			1,7	3.8	T255A6601
1½" ASA 300					T256A6601
DN 50 PN 10/16 Type B					T230A6601
DN 50 PN 25/40 Type B					T231A6601
2" ASA 150					T257A6601
2" ASA 300					T258A6601
undrilled Ø 165 mm	Hastelloy				T219A7701
DN 40 PN 10/16 Type B					T227A7701
DN 40 PN 25/40 Type B					T228A7701
1½" ASA 150					T255A7701
1½" ASA 300 B					T256A7701
DN 50 PN 10/16 Type B					T230A7701
DN 50 PN 25/40 Type B					T231A7701
2" ASA 150					T257A7701
2" ASA 300					T258A7701
undrilled Ø 165 mm	PEEK				T219A9901
DN 40 PN 10/16 Type B			1,0	2.0	T227A9901
1½" ASA 150					T255A9901
DN 50 PN 10/16 Type B			1,0	2.0	T230A9901
2" ASA 150			1,0	2.0	T257A9901

According to
NATO STANAG 3756



*) Type E (with spigot),
EN 1092-1, see p. 44

**) Flange with standard thickness

1) PN 10/16/25/40 = EN 1092
(types see page 44),
ASA = ANSI B16.5 (150 o. 300 psi),
DIN 28459 = old standard TW, 10 bar.
DIN 11864 = DIN 11864-2 (aseptic flange)

2) Material: Al = Aluminium,
GM = Gunmetal, SS = Stainless Steel

3) Standard seal FPM/FKM. Alternative
materials, e. g. EPDM, Chemraz®,
Kalrez®, NBR or HNBR on request.

Viton® is a registered trademark of
DuPont, DuPont Elastomers.

2" (Ø 70 mm) Hose Unit (Coupler) – Female Thread

Connection ¹⁾ Inch/DN	Body Material ²⁾	Seal		Weight ≈		Mann Tek Code No.
		O-Ring ³⁾	Thread Seal	kg	lbs	
F 1½" BSP	Al	Standard: FPM/FKM (Viton®)	PUR (Polyurethane)	1,2	2.7	S207A1101B
F 1½" BSP-B Mouth*)						S207A1101BI
F 2" BSP				1,1	2.4	S210A1101B
F 2" BSP-B Mouth*)				1,1	2.4	S210A1101BI
F 1½" NPT			—	1,1	2.4	S208A1101
F 1½" NPT-B Mouth*)						S208A1101I
F 2" NPT				1,1	2.4	S211A1101
F 2" NPT-B Mouth*)						S211A1101I
F 1½" BSP	Br		PUR (Polyurethane)	2,6	5.7	S207A2201B
F 1½" BSP-B Mouth*)						S207A2201BI
F 2" BSP				2,4	5.3	S210A2201B
F 2" BSP-B Mouth*)						S210A2201BI
F 1½" NPT			—	2,5	5.5	S208A2201
F 1½" NPT-B Mouth*)						S208A2201I
F 2" NPT				2,5	5.5	S211A2201
F 2" NPT-B Mouth*)						S211A2201I
F 1½" BSP	SS	PTFE (Teflon®)	2,5	5.5	S207A4401A	
F 2" BSP			2,3	5.1	S210A4401A	
F 1½" NPT		—	2,4	5.3	S208A4401	
F 2" NPT			2,3	5.1	S211A4401	
F 1½" BSP	Titan	PTFE (Teflon®)	1,3	2.9	S207A6601A	
F 2" BSP			1,3	2.9	S210A6601A	
F 1½" NPT		—			S208A6601	
F 2" NPT			1,4	3.1	S211A6601	
F 1½" BSP	Hastelloy	PTFE (Teflon®)	2,3	5.1	S207A7701A	
F 2" BSP			2,3	5.1	S210A7701A	
F 1½" NPT		—	2,3	5.1	S208A7701	
F 2" NPT			2,3	5.1	S211A7701	
F 1½" BSP	PEEK	PTFE (Teflon®)			S207A9901A	
F 2" BSP			1,3	2.9	S210A9901A	
F 1½" NPT		—			S208A9901	
F 2" NPT			1,3	2.9	S211A9901	

According to
NATO STANAG 3756



*) Adopted for older models of
Emco Wheaton male couplings

1) F = Female thread, BSP =
EN ISO 228, NPT = ANSI B1.20.1

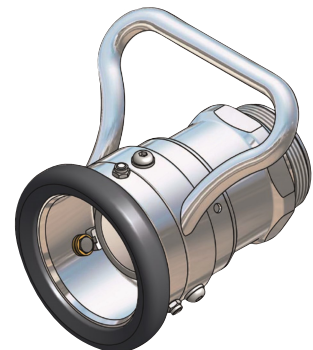
2) Material: Al = Aluminium, Br = Brass,
SS = Stainless Steel

3) Standard seal FPM/FKM. Alternative
materials, e.g. EPDM, Chemraz®,
Kalrez®, NBR or HNBR on request.

2" (Ø 70 mm) Hose Unit (Coupler) – Male Thread

Flange ¹⁾	Body Material ²⁾	Seal ³⁾	Weight ≈		Mann Tek Code No.
		O-Ring	kg	lbs	
2" BSP AG	Al	Standard: FPM/FKM (Viton®) Other on request.			S278A1101
2" NPT AG					S279A1101
S60 x 6 AG					S2109A1101
W2" - 7 AG			1,3	2.1	S2123A1101
2" BSP AG	Br				S278A2201
2" NPT AG					S279A2201
S60x6 AG					S2109A2201
W2" - 7 AG					S2123A2201
2" BSP AG	SS		2,3	5.1	S278A4401
2" NPT AG					S279A4401
S60x6 AG					S2109A4401

According to
NATO STANAG 3756



1) M = Male thread, BSP = EN ISO 228, NPT = ANSI B1.20.1, S60 x 6 = thread for IBC, W 2" heating oil connection Sweden

2) Material: Al = Aluminium, Br = Brass, SS = Stainless Steel

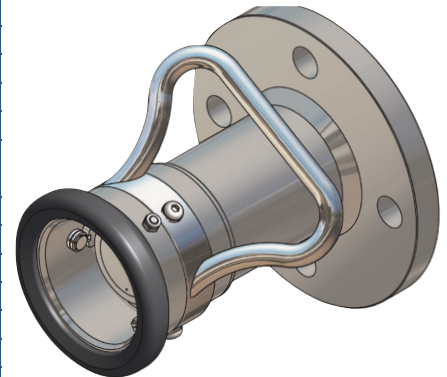
3) Standard seal FPM/FKM. Alternative materials, e.g. EPDM, Chemraz®, Kalrez®, NBR or HNBR on request.

Viton® and Teflon® are registered trademarks of DuPont, DuPont Elastomers.

2" (Ø 70 mm) Coupler – Flanged Inlet

Flange ¹⁾	Body Material ²⁾	Seal ³⁾	Weight ≈		Mann Tek Code No.
		O-Ring	kg	lbs	
undrilled Ø 165 mm	Al	Standard: FPM/FKM (Viton®) Other on request.			S219A1101
DN 40 PN 10/16 Type A					S227A1101
1½" ASA 150					S255A1101
DN 50 PN 10/16 Type A			2,3	5.1	S230A1101
2" ASA 150					S257A1101
DIN 28459 'TW 1' / DN 80					S265A1101
undrilled Ø 165 mm	GM				S219A2201
DN 40 PN 10/16 Type B					S227A2201
DN 40 PN 25/40 Type B					S228A2201
1½" ASA 150			5,1	11.2	S255A2201
1½" ASA 300					S256A2201
DN 50 PN 10/16 Type B					S230A2201
DN 50 PN 25/40 Type B					S231A2201
2" ASA 150			5,1	11.2	S257A2201
2" ASA 300					S258A2201
DIN 28459 'TW 1' / DN 80					S265A2201
undrilled Ø 165 mm	SS				S219A4401
o. Bohrungen Ø 165 mm **)					S219A4401F
DN 40 PN 10/16 Type B					S227A4401
DN 40 PN 10/16 Type B **)					S227A4401F
DN 40 PN 25/40 Type B					S228A4401
DN 40 PN 25/40 Type B **)					S228A4401F
1½" ASA 150					S255A4401
1½" ASA 150 **)					S255A4401F
1½" ASA 300					S256A4401
1½" ASA 300 **)			6,6	14.6	S256A4401F
DN 50 PN 25/40 Type E *)					S229A4401
DN 50 PN 10/16 Type B			5,4	11.9	S230A4401
DN 50 PN 10/16 Type B **)					S230A4401F
DN 50 PN 25/40 Type B			5,4	11.9	S231A4401
DN 50 PN 25/40 Type B **)					S231A4401F
2" ASA 150			5,1	11.2	S257A4401
2" ASA 150 **)			5,1	11.2	S257A4401F
2" ASA 300					S258A4401
2" ASA 300 **)			2,5	5.5	S258A4401F
DIN 28459 'TW 1' / DN 80					S265A4401
DN 50 DIN 11864			3,1	6.8	S2152B4401
undrilled Ø 165 mm	Titan				S219A6601
DN 40 PN 10/16 Type B					S227A6601
DN 40 PN 25/40 Type B					S228A6601
1½" ASA 150					S255A6601
1½" ASA 300					S256A6601
DN 50 PN 10/16 Type B					S230A6601
DN 50 PN 25/40 Type B					S231A6601
2" ASA 150					S257A6601
2" ASA 300					S258A6601
undrilled Ø 165 mm	Hastelloy				S219A7701
DN 40 PN 10/16 Type B					S227A7701
DN 40 PN 25/40 Type B					S228A7701
1½" ASA 150					S255A7701
1½" ASA 300					S256A7701
DN 50 PN 10/16 Type B			5,4	11.9	S230A7701
DN 50 PN 25/40 Type B					S231A7701
2" ASA 150					S257A7701
2" ASA 300					S258A7701
undrilled Ø 165 mm	PEEK				S219A9901
DN 40 PN 10/16 Type B			5,4	11.9	S227A9901
1½" ASA 150 Type B					S255A9901
DN 50 PN 10/16 Type B			5,4	11.9	S230A9901
2" ASA 150					S257A9901

According to
NATO STANAG 3756



*) Type E (with spigot),
EN 1092-1, see page 44

**) Flange with standard thickness

1) PN 10/16/25/40 = EN 1092
(types see page 44),
ASA = ANSI B16.5 (150 o. 300 psi),
DIN 28459 = old standard TW, 10 bar.
DIN 11864 = DIN 11864-2 (aseptic flange).

2) Material: Al = Aluminium,
GM = Gunmetal, SS = Stainless Steel

3) Standard seal FPM/FKM. Alternative
materials, e. g. EPDM, Chemraz®,
Kalrez®, NBR or HNBR on request.

Viton® is a registered trademark of
DuPont, DuPont Elastomers.