

# 1" (Ø 56 mm) Technical Information

## Tank Unit (Adapter) and Hose Unit (Coupler)



Material	Maximum Working Pressure	Test Pressure	Minimum Burst Pressure
Aluminium	16 bar / 232 psi	24 bar / 348 psi	80 bar / 1160 psi
Brass/Gunmetal	16 bar / 232 psi	24 bar / 348 psi	80 bar / 1160 psi
Stainless Steel	25 bar / 363 psi	37,5 bar / 544 psi	125 bar / 1813 psi
Titan	25 bar / 363 psi	37,5 bar / 544 psi	125 bar / 1813 psi
Hastelloy	25 bar / 363 psi	37,5 bar / 544 psi	125 bar / 1813 psi
PEEK	6 bar / 87 psi	9 bar / 131 psi	30 bar / 435 psi

### Connections

¾", 1" and 1¼" in BSP, NPT or metrical thread, or flanged inlet.

### Applications

For industrial process plant, road and rail tankers, IBC containers, pharmaceutical and petrochemical industries, diesel locomotive refuelling etc.

Recommended for all types of mini bulk liquid product transfer, including container and drum filling, or on any application where spillage needs to be minimized.

### Media

**Petroleum products:** gasoline, diesel, oil etc.

**Chemical products:** e.g. ethylene oxide, propylene oxide, acrylonitrile, butadiene, ammonia, vinyl chloride, toluene, xylene, sulphuric acid, phenol etc.

**Gas:** vapor recovery/balance systems for various media.

### Material of Body

Aluminium, brass, stainless steel, Hastelloy and PEEK. Others on request.

### Seals

Standard seals in FPM (Viton®) - alternatively EPDM, FKM (Chemraz®, Kalrez®), NBR/HBNR. Other materials on request.

### High Flow Rates / Low Pressure Drop

Allows maximum product transfer with minimal losses

### Recommended Maximum Flow Rates

200 litres / minute (fuel)

### Selectivity

#### - avoid mixing products

To avoid product contamination caused by connecting a hose unit to the wrong tank unit, selective versions of the hose and tank units are available. Each unit has a number of selective positions, designated by a coded part number according to the coupling size – specify when placing order. See page 32 ff.

### Interchangeability

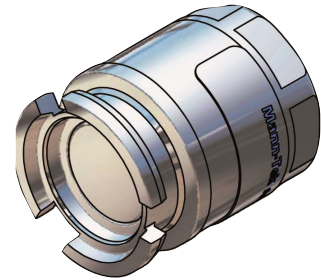
Compatible with couplings of other manufacturers.

### Hose Unit with Integrated Swivel

All hose units are supplied with an integrated swivel.

# 1" (Ø 56 mm) Tank Unit (Adapter) – Female Thread

Connection <sup>1)</sup> Inch/DN	Body Material <sup>2)</sup>	Seal		Weight ≈		Mann Tek Code No.	
		O-Ring <sup>3)</sup>	Flat Seal	kg	lbs		
F ½" BSP	Al	Standard: <b>FPM/FKM</b> (Viton®)	PUR (Polyurethane)	0,3	0.7	T1133A1101B	
F ¾" BSP						T101A1101B	
F 1" BSP						T103A1101B	
F 1¼" BSP						T105A1101B	
F M 54 x 1,5			T1138A1101B				
F ½" NPT			—			T1132A1101	
F ¾" NPT						T102A1101	
F 1" NPT						T104A1101	
F 1¼" NPT						T106A1101	
F ½" BSP						Br	PUR (Polyurethane)
F ¾" BSP	T101A2201B						
F 1" BSP	T103A2201B						
F 1¼" BSP	T105A2201B						
F M 54 x 1,5	T1138A2201B						
F ½" NPT	—		T1132A2201				
F ¾" NPT			T102A2201				
F 1" NPT			T104A2201				
F 1¼" NPT			T106A2201				
F ½" BSP			SS	PTFE (Teflon®)	0,7		1.5
F ¾" BSP						T101A4401A	
F 1" BSP	T103A4401A						
F 1¼" BSP	T105A4401A						
F M 54 x 1,5	T1138A4401A						
F ½" NPT	—			T1132A4401			
F ¾" NPT				T102A4401			
F 1" NPT				T104A4401			
F 1¼" NPT				T106A4401			
F ¾" BSP				Titan		PTFE (Teflon®)	
F 1" BSP			T103A6601A				
F 1¼" BSP	—	T105A6601A					
F ¾" NPT		T102A6601					
F 1" NPT		T104A6601					
F 1¼" NPT		T106A6601					
F ¾" BSP	Hastelloy	PTFE (Teflon®)	0,8	1.8	T101A7701A		
F 1" BSP					T103A7701A		
F 1¼" BSP		—			T105A7701A		
F ¾" NPT					T102A7701		
F 1" NPT					T104A7701		
F 1¼" NPT					T106A7701		
F ¾" BSP	PEEK	PTFE (Teflon®)	0,1	0.2	T101A9901A		
F 1" BSP					T103A9901A		
F 1¼" BSP		—			T105A9901A		
F ¾" NPT					T102A9901		
F 1" NPT					T104A9901		
F 1¼" NPT					T106A9901		



<sup>1)</sup> F = Female thread, BSP = EN ISO 228, NPT = ANSI B1.20.1

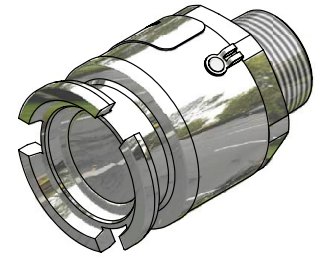
<sup>2)</sup> Material: Al = Aluminium, Br = Brass, SS = Stainless Steel

<sup>3)</sup> Standard seal FPM/FKM. Alternative materials, e.g. EPDM, Chemraz®, Kalrez®, NBR or HNBR on request.

Viton® and Teflon® are registered trademarks of DuPont, DuPont Elastomers.

## 1" (Ø 56 mm) Tank Unit (Adapter) – Male Thread

Connection <sup>1)</sup> Inch/DN	Body Material <sup>2)</sup>	Seal <sup>3)</sup>	Weight ≈		Mann Tek Code No.
		O-Ring	kg	lbs	
M ¾" BSP	Al	Standard: <b>FPM/FKM</b> (Viton®)  Other on request.			<b>T169A1101</b>
M ¾" NPT					<b>T170A1101</b>
M 1" BSP					<b>T171A1101</b>
M 1" NPT					<b>T172A1101</b>
M ¾" BSP	Br				<b>T169A1101</b>
M ¾" NPT					<b>T170A1101</b>
M 1" BSP					<b>T171A1101</b>
M 1" NPT					<b>T172A1101</b>
M ¾" BSP	SS				<b>T169A4401</b>
M ¾" NPT					<b>T170A4401</b>
M 1" BSP					<b>T171A4401</b>
M 1" NPT					<b>T172A4401</b>



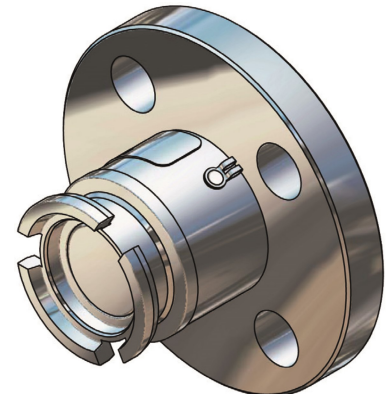
<sup>1)</sup> M = Male thread, BSP = EN ISO 228, NPT = ANSI B1.20.1

<sup>2)</sup> Material: Al = Aluminium, Br = Brass, SS = Stainless Steel,

<sup>3)</sup> Standard seal FPM/FKM. Alternative materials, e.g. EPDM, Chemraz®, Kalrez®, NBR or HNBR on request.

## 1" (Ø 56 mm) Tank Unit (Adapter) – Flanged Inlet

Flange <sup>1)</sup>	Body Material <sup>2)</sup>	Seal <sup>3)</sup>	Weight ≈		Mann Tek Code No.
		O-Ring	kg	lbs	
undrilled	Al	Standard: <b>FPM/FKM</b> (Viton®)	1,1	2.4	T118A1101
DN 25 PN 10/16 Type A					T123A1101
DN 25 PN 25/40 Type A					T124A1101
1" ASA 150					T151A1101
1" ASA 300					T152A1101
undrilled	Br		1,6	3.5	T118A2201
DN 25 PN 10/16 Type B					T123A2201
DN 25 PN 25/40 Type B					T124A2201
1" ASA 150					T151A2201
1" ASA 300					T152A2201
undrilled	SS		1,5	3.3	T118A4401
DN 25 PN 10/16 Type B					T123A4401
DN 25 PN 25/40 Type B					T124A4401
1" ASA 150					T151A4401
1" ASA 300					T152A4401
undrilled	Titan	Other on request.	0,8	1.8	T118A6601
DN 25 PN 10/16 Type B					T123A6601
DN 25 PN 25/40 Type B					T124A6601
1" ASA 150					T151A6601
1" ASA 300					T152A6601
DN 25 PN 10/16 Type B	Hastelloy	1,7	3.8	T123A7701	
DN 25 PN 25/40 Type B				T124A7701	
1" ASA 150				T151A7701	
1" ASA 300				T152A7701	
undrilled	PEEK	0,2	0.4	T118A9901	
DN 25 PN 10/16 Type B				T123A9901	
DN 25 PN 25/40 Type B				T124A9901	
1" ASA 150				T151A9901	
1" ASA 300				T152A9901	



<sup>1)</sup> PN 10/16/25/40 = EN 1092 (types see page 44), ANSI B16.5.

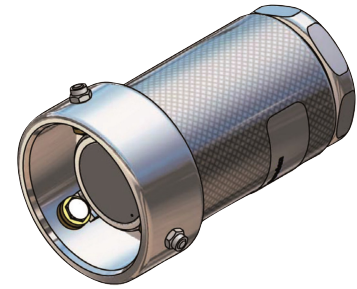
<sup>2)</sup> Material: Al = Aluminium, Br = Brass, SS = Stainless Steel

<sup>3)</sup> Standard seal FPM/FKM. Alternative materials, e.g. EPDM, Chemraz®, Kalrez®, NBR or HNBR on request.

Viton® is a registered trademark of DuPont, DuPont Elastomers.

# 1" (Ø 56 mm) Hose Unit (Coupler) – Female Thread

Connection <sup>1)</sup> Inch/DN	Body Material <sup>2)</sup>	Seal		Weight ≈		Mann Tek Code No.
		O-Ring <sup>3)</sup>	Thread Seal	kg	lbs	
F ½" BSP	Al	Standard: <b>FPM/FKM</b> (Viton®)	PUR (Polyurethane)	0,5	1.1	S1133A1101B
F ¾" BSP						S101A1101B
F 1" BSP						S103A1101B
F 1¼" BSP						S105A1101B
F M 54 x 1,5						S1138A1101B
F ½" NPT			—			S1132A1101
F ¾" NPT						S102A1101
F 1" NPT						S104A1101
F 1¼" NPT						S106A1101
F ½" BSP						Br
F ¾" BSP	S101A2201B					
F 1" BSP	S103A2201B					
F 1¼" BSP	S105A2201B					
F M 54 x 1,5	S1138A2201B					
F ½" NPT	—		S1132A2201			
F ¾" NPT			S102A2201			
F 1" NPT			S104A2201			
F 1¼" NPT			S106A2201			
F ½" BSP			SS	PTFE (Teflon®)	1,3	
F ¾" BSP	S101A4401A					
F 1" BSP	S103A4401A					
F 1¼" BSP	S105A4401A					
F M 54 x 1,5	S1138A4401A					
F ½" NPT	—	S1132A4401				
F ¾" NPT		S102A4401				
F 1" NPT		S104A4401				
F 1¼" NPT		S106A4401				
F ¾" BSP		Titan		PTFE (Teflon®)		0,7
F 1" BSP	S103A6601A					
F 1¼" BSP	—		S105A6601A			
F ¾" NPT			S102A6601			
F 1" NPT			S104A6601			
F 1¼" NPT			S106A6601			
F ¾" BSP	Hastelloy	PTFE (Teflon®)	1,5	3.3	S101A7701A	
F 1" BSP					S103A7701A	
F 1¼" BSP		—			S105A7701A	
F ¾" NPT					S102A7701	
F 1" NPT					S104A7701	
F 1¼" NPT					S106A7701	
F ¾" BSP	PEEK	PTFE (Teflon®)	0,3	0.7	S101A9901A	
F 1" BSP					S103A9901A	
F 1¼" BSP		—			S105A9901A	
F ¾" NPT					S102A9901	
F 1" NPT					S104A9901	
F 1¼" NPT					S106A9901	



<sup>1)</sup> F = Female thread, BSP = EN ISO 228, NPT = ANSI B1.20.1

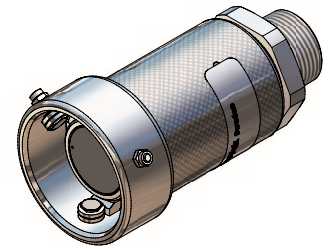
<sup>2)</sup> Material: Al = Aluminium, Br = Brass, SS = Stainless Steel

<sup>3)</sup> Standard seal FPM/FKM. Alternative materials, e.g. EPDM, Chemraz®, Kalrez®, NBR or HNBR on request.

Viton® and Teflon® are registered trademarks of DuPont, DuPont Elastomers.

## 1" (Ø 56 mm) Hose Unit (Coupler) – Male Thread

Connection <sup>1)</sup> Inch/DN	Body Material <sup>2)</sup>	Seal <sup>3)</sup>	Weight ≈		Mann Tek Code No.
		O-Ring	kg	lbs	
M ¾" BSP	Al	Standard: <b>FPM/FKM</b> (Viton®)  Other on request.			<b>S169A1101</b>
M ¾" NPT					<b>S170A1101</b>
M 1 " BSP					<b>S171A1101</b>
M 1 " NPT					<b>S172A1101</b>
M ¾" BSP	Br				<b>S169A1101</b>
M ¾" NPT					<b>S170A1101</b>
M 1 " BSP					<b>S171A1101</b>
M 1 " NPT					<b>S172A1101</b>
M ¾" BSP	SS				<b>S169A4401</b>
M ¾" NPT					<b>S170A4401</b>
M 1 " BSP					<b>S171A4401</b>
M 1 " NPT					<b>S172A4401</b>
			1,4	3.0	



<sup>1)</sup> M = Male thread, BSP = EN ISO 228, NPT = ANSI B1.20.1

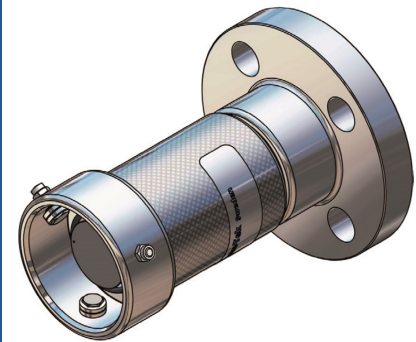
<sup>2)</sup> Material: Al = Aluminium, Br = Brass, SS = Stainless Steel

<sup>3)</sup> Standard seal FPM/FKM. Alternative materials,

e.g. EPDM, Chemraz®, Kalrez®, NBR or HNBR on request.

## 1" (Ø 56 mm) Coupler – Flanged Inlet

Flange <sup>1)</sup>	Body Material <sup>2)</sup>	Seal <sup>3)</sup>	Weight ≈		Mann Tek Code No.
		O-Ring	kg	lbs	
undrilled	Al	Standard: <b>FPM/FKM</b> (Viton®)  Other on request.	1,1	2.4	S118A1101
DN 25 PN 10/16 Type A					S123A1101
DN 25 PN 25/40 Type A					S124A1101
¾" ASA 150					S149A1101
1" ASA 150					S151A1101
1" ASA 300					S152A1101
DN 25 DIN 11864					S115A1101
undrilled	Br		1,6	3.5	S118A2201
DN 25 PN 10/16 Type B					S123A2201
DN 25 PN 25/40 Type B					S124A2201
¾" ASA 150					S149A2201
1" ASA 150					S151A2201
1" ASA 300					S152A2201
undrilled					SS
DN 25 PN 10/16 Type B	S123A4401				
DN 25 PN 25/40 Type B	S124A4401				
¾" ASA 150	S149A4401				
1" ASA 150	S151A4401				
1" ASA 300	S152A4401				
undrilled	Titan		1,2	2.7	
DN 25 PN 10/16 Type B					S123A6601
DN 25 PN 25/40 Type B		S124A6601			
1" ASA 150		S151A6601			
1" ASA 300		S152A6601			
DN 25 PN 10/16 Type B		Hastelloy			2,5
DN 25 PN 25/40 Type B	S124A7701				
1" ASA 150	S151A7701				
1" ASA 300	S152A7701				
undrilled	PEEK	0,5	1.1	S118A9901	
DN 25 PN 10/16 Type B				S123A9901	
DN 25 PN 25/40 Type B				S124A9901	
1" ASA 150				S151A9901	
1" ASA 300				S152A9901	



<sup>1)</sup> PN 10/16/25/40 = EN 1092 (types see page 44),  
ASA = ANSI B16.5 (150 o. 300 psi), 150 or 300 psi.  
DIN 11864 = DIN 11864-2 (aseptic flange)

<sup>2)</sup> Material: Al = Aluminium, Br = Brass, SS = Stainless Steel

<sup>3)</sup> Standard seal FPM/FKM. Alternative materials, e.g. EPDM, Chemraz®, Kalrez®, NBR or HNBR on request.

Viton® is a registered trademark of DuPont, DuPont Elastomers.